

February 2025

Dear Parents,

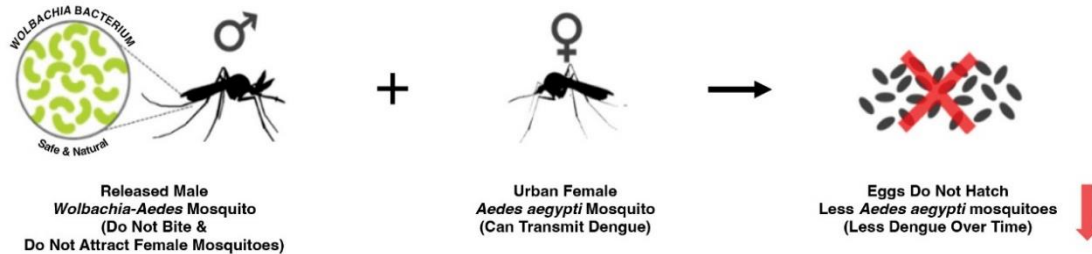
Project *Wolbachia* – Singapore: Release of Male *Wolbachia-Aedes* Mosquitoes every Wednesday & Saturday to Help Fight Dengue in the Neighbourhood

As part of Project *Wolbachia* – Singapore, NEA will be **releasing male *Wolbachia*-carrying *Aedes aegypti* (*Wolbachia-Aedes*) mosquitoes** to help fight dengue in the neighbourhood. Starting **19 February 2025**, releases will be carried out at residential areas which may include the vicinity of schools every **Wednesday & Saturday morning** from 6.00 am to 12.00 pm. You and/or your child may notice more mosquitoes at the school’s vicinity but don’t worry, **male mosquitoes do not bite** unlike their female counterpart. For the release locations, please refer to Annex A.

2 The early results from the multi-site field study, started in 2022, has shown that residents living in these study sites are about 75% less likely to be infected with dengue. This is the result of an 80% to 90% reduction in *Aedes aegypti* mosquito population at the sites.

3 How it works

- Released male ***Wolbachia-Aedes*** mosquitoes mate with urban female *Aedes aegypti* mosquitoes (without *Wolbachia*), resulting in eggs that **do not hatch**. Continued releases lead to a decline in the urban *Aedes aegypti* mosquito population, thereby reducing dengue transmission.



*Project *Wolbachia* targets *Aedes aegypti* mosquitoes - the main vector for dengue.

4 What you and/or your child can do

- Continue with your usual mosquito control measures. Apply insect repellent or kill the mosquitoes as you normally would, as it is difficult to tell the male and female mosquitoes apart.

5 While Project *Wolbachia* – Singapore has shown good results, it is not a silver bullet. Please remain vigilant and continue to Stop Dengue with B-L-O-C-K even if you are residing in a neighbourhood with *Wolbachia* coverage.



6 We seek your understanding and support for ‘Project *Wolbachia* – Singapore’. For more information on the Project, please scan the QR codes below.

Regards,



Please scan this QR Code for more info:



www.go.gov.sg/wolbachia

Watch the Project *Wolbachia* cartoon series here:



<https://www.youtube.com/watch?v=2VTe6eLvAFE>

NEA Feedback Channels: NEA website (www.nea.gov.sg/feedback), or via the myENV (www.nea.gov.sg/myenv) or OneService (www.oneservice.gov.sg) mobile application