

# Jurongville Secondary School

## The JVS PLD Initiative

### Parent Briefing 2026

*Learn More Actively,  
Think More Critically and Creatively,  
Experience More Joy & Success.*



Irantaffy (Mr Said) HOD ICT  
Eddie (Mr Tay) SH ICT  
Alen (Mr Seng) ICT Manager

# The National Digital Literacy Programme (NDLP) and the PDLP

An Overview

## Intended Outcomes of the PLD Initiative

1. The NDLP was launched in March 2020 to help students **strengthen their digital literacy and acquire digital skills** needed to navigate an increasingly digitalised world.
2. Under the NDLP, every secondary school student will **own a school-prescribed personal learning device (PLD)**. Students may use funds from their Edusave Account to pay for the PLD.

The use of the PLD for teaching and learning aims to:



Support the Development  
of Digital Literacy



Support Self-Directed and  
Collaborative Learning



Enhance Teaching and  
Learning

## How will your child/ward use the PLD?

### In Jurongville Secondary School, your child will...

- have the opportunities to experience specific computer aided drawing tools and ICT software to enhance the qualities of their work.
- use e-Book to support learning (Hands-on active learning)
- review past lessons and access digital resources curated by the teachers on the Singapore Student Learning Space (SLS) and Google Classrooms
- visit exhibitions in virtual museums in SG & Collaborate with Students from other school or countries



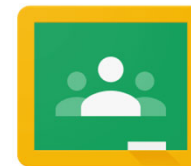
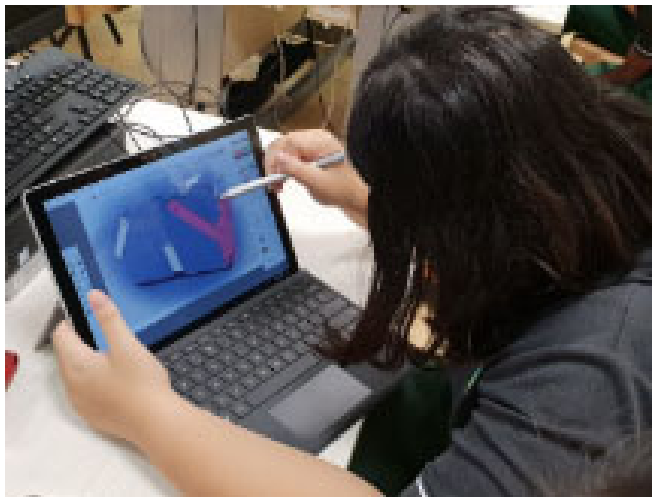
SINGAPORE  
STUDENT  
LEARNING  
SPACE



# How will your child use the Personal Learning Devices?

## In Jurongville Secondary School, your child will...

- learn curriculum subjects independently or collaboratively through online tools like Google Classroom and Google Suite.
- connect to the real world by keeping abreast with news and current affairs
- hone oracy skills through presentations, recitals, video-making and recording their views or speeches;



Google Classroom

## Supporting Students in the Safe and Effective Use of the Devices

The school has measures in place to enable a safer digital environment for learning with the use of PLDs, e.g.

- School rules on digital device use
- Classroom management and routines
- Cyber Wellness Education in CCE
- Digital Literacy & Technological Classes (DLTS) for Lower Sec
- Partnering parents/guardians to support students in their use of technology for learning
- Device Management Application (DMA) to support a safer digital environment for learning

### Cyber Wellness Concerns Identified by Surveys and Studies



Harmful Online Content



Gaming and associated risks



Cyberbullying



Excessive social media use

# School Rules on Digital Device Use

## Usage Restrictions

- Mobile Phones and Smart Watches are strictly prohibited during curriculum time (7:30 am to 5:30 pm).
- Must be switched off and locked in lockers during all lessons.
- Must be kept in their bags or at allocated venues (including supplementary, remedial and CCAs).
- No charging of devices is allowed in School.

## Media & Privacy Rules

- No photography or recording without permission from teachers.
- No Posting school-related media on social media.

## Serious Misconduct

- Abuse of devices that infringes on the dignity or modesty of others is a serious offence.
- The school reserves the right to involve the police for legal breaches.

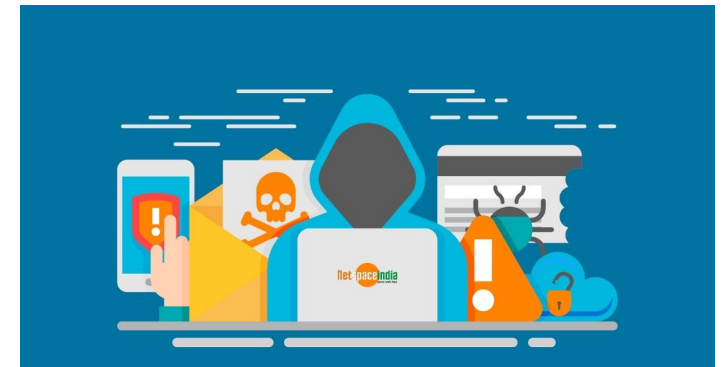
## Confiscation & Return Policy

- Phones when confiscated will need parents to personally collect the phone from the school.

# Classroom Management and Routines

## Safer digital environment for learning

1. Device will be brought to school every day.  
Classroom lockers available to reduce the weight of school bags.
2. Teachers will require use of device for lessons, but not for all lessons.
3. Students will be able to access notes / teachers' teaching materials learning materials in the Student Learning Space or Google Classroom.
4. Students can submit some assignments digitally to their teachers.
5. Students can use their device in school after lesson hours.



# Cyber Wellness Education

Safer digital environment for learning

## A. Educating students on Cyber Wellness

MOE has made significant changes to the Character and Citizenship Education (CCE). Cyber Wellness will feature significantly in the CCE2021 lessons.

Topics covered in the Cyber Wellness lessons include:

- Cyber Use
- Cyber Identity
- Cyber Relationships
- Cyber Citizenship
- Cyber Ethics



## Parents'/Guardians' Role



### Safer digital environment for learning

- We would like to partner parents/guardians to ensure that students are well supported in their use of technology for learning.
- As parents/guardians, you can help in the following ways:
  - Model good digital habits for your child/ward e.g. parents/guardians not using devices during family meals.
  - Know your child/ward well, and have conversations with your child/ward about safe and responsible use of technology.
  - Discuss and come up with ground rules for internet/device usage that both your child/ward and you can agree with.
  - Encourage your child/ward to use productivity tools using his/her PLD, to organise information and simplify tasks for efficiency.

# Supporting Resources

Parents/guardians play a crucial role in guiding your child/ward to use devices responsibly and safely. DMA complements your efforts in supporting your child/ward as they navigate the digital space. Here are some resources that you can refer to:

[A. Parent Kit](#)

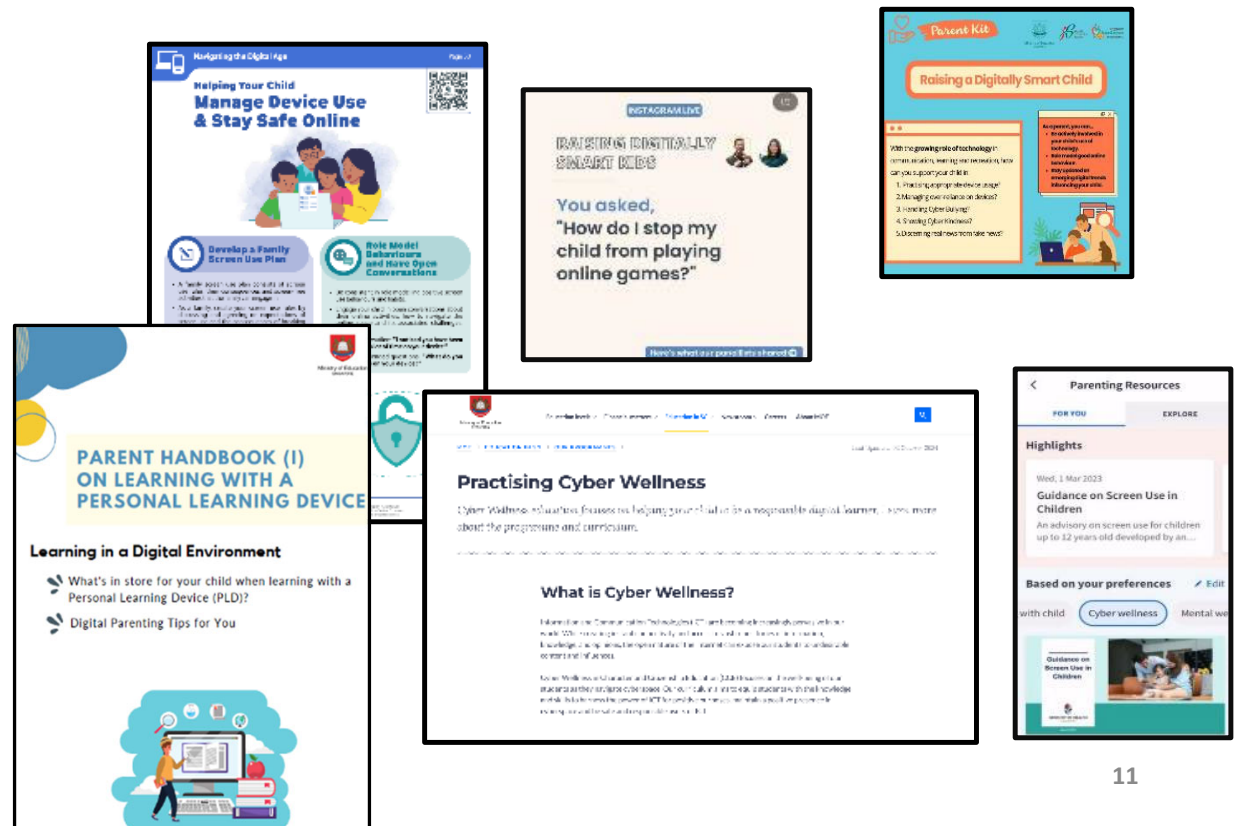
[B. Bite-size tips and advice via Parentingwith.MOEsg Instagram](#)

[C. Resources from MOE and other agencies \(available on resources repository in Parents Gateway\)](#)

[D. Parenting for Wellness Toolbox for Parents](#)

[E. More resources are available via MOE Cyber Wellness Webpage](#)

[F. Parent Handbooks \(I\) and \(II\) on Learning with a Personal Learning Device](#)



# **Role of the MOE Device Management Application (DMA) in Providing a Safer Digital Environment for Learning**

## Device Management Application Installation

- The MOE DMA solution for iPad, Jamf, is an app that will be installed on all students' PLDs to support their safe and responsible use of devices.
- The DMA will be funded by MOE.
- The installation of the MOE DMA applies to both devices purchased through the school and any student-owned devices that parents/guardians opt for the student to use instead of the school-prescribed PLD.
- The MOE DMA will be installed after the collection of the device. Students will be guided on the installation.
- The MOE DMA will be uninstalled from the device when students graduate or leave the school.

## In-School DMA Settings (Default)

Schools will determine DMA settings for **in-school use**. As a default, these settings will continue to be in place after school as well:

- MOE and the school will set the level of web content filtering, including filtering objectionable content or content that may not be conducive to teaching and learning (e.g., online messaging, social media, pornography, gambling, or websites containing extremist content).<sup>1</sup>
  - School hours are defined to be from 6:30 am to 5:30 pm and after school hours-from 5:30 pm to 6:30 am. The device will shut down at 8:30 pm by default.
  - The school will determine the applications and programs to be installed to support teaching and learning.
- <sup>1</sup> YouTube is not blocked by default as teachers use YouTube for teaching and learning. However, YouTube videos that are categorised as harmful by YouTube Restricted are blocked.

## After-School DMA Parent Options

1. After-School DMA Parent Options provide parents with the flexibility in managing their child's/ward's use of PLD after school hours.
2. The following tables outline the different levels of restrictions, controls, and monitoring for each DMA option after school hours.

Default (Lower Sec)	Option A (Upon Special Request in SEM 2)	Option B (Special Request in Upper Sec)
<b>Default Setting (Note: This will apply if no alternative options are chosen)</b>	<b>DMA settings can be modified by Parents/Guardians after school hours</b>	<b>DMA will be inactive after school hours<sup>1</sup></b>
For parents/guardians who want their child's/ward's use of the PLD to be restricted only to teaching and learning, and prefer to leave it to the school to decide on DMA settings after school hours.	For parents/guardians who prefer to take charge of the level of restrictions for their child's/ward's use of the PLD after school hours regulated by the DMA.	For parents/guardians who do not want their child's/ward's use of the PLD after school hours to be regulated by the DMA at all.

<sup>1</sup> No data will be collected after school hours when the DMA is inactive.

- Having default school settings continue after school hours is the best option for parents/guardians who prefer not to, or do not feel ready to manage their child's/ward's device use on their own.
- Parents/guardians can request to change their choice of DMA settings, which is the existing practice.

## After-School DMA Parent Options

	Default (Lower Sec)	Option A (Upon Special Request in SEM 2)	Option B (Special Request in Upper Sec)
<b>Protect students from objectionable content</b>	<p>Web content filtering will include, and not limited to, the following categories:</p> <ul style="list-style-type: none"> <li>• Violent/extremist content</li> <li>• Sexual/pornographic content</li> <li>• Gambling-related content</li> <li>• Suicide/self-harm content</li> <li>• Cyberbullying content</li> <li>• Content endangering public health</li> </ul>	<p>Parents/Guardians will be able to include additional web content filtering using the Jamf Parent app. However, parents/guardians cannot allow access to web content that is filtered out under the Default Setting.</p>	<p>No content filtering after school hours.</p>

## After-School DMA Parent Options

	Default (Lower Sec)	Option A (Upon Special Request in SEM 2)	Option B (Special Request in Upper Sec)
<b>Reduce distractions from learning through control of applications</b>	Parents/Guardians will <b>not</b> be able to install additional applications.	<p>Parents/Guardians will be able to install additional applications after school hours by signing in to the Apple App Store using their personal Apple Accounts.</p> <p>Applications installed by parents/guardians/students will not be accessible during school hours.</p> <p>Parents/Guardians can limit after school access to applications that they install on the PLD.</p>	<p>Parents/Guardians/Students will be able to install additional applications after school hours by signing in to the Apple App Store using their personal Apple Accounts.</p> <p>Applications installed by parents/guardians/students will not be accessible during school hours.</p>

# After-School DMA Parent Options

	Default (Lower Sec)	Option A (Upon Special Request in SEM 2)	Option B (Special Request in Upper Sec)
<b>Limit screen time</b>	The school will define the specific hours during which the student can use the PLD.	Parents/Guardians can modify the amount of screen time for their child/ward by requesting the school set sleep hours (by selecting 1 prescribed option) on their child's/ward's PLD. <sup>2</sup>	No limitation on duration of screen time. after school hours.  Sleep hours are not enforced. <sup>3</sup>
<b>Monitor students' cyber activities</b>	Parents/Guardians will not be able to track their child's/ward's web browsing history due to Apple's Privacy Policy.		
<b>Provision of Jamf Parent account</b>	X	✓	X

<sup>2</sup> During school hours, the screen time limits set by the school will override parents/guardians' settings.

<sup>3</sup> It is not recommended to install other parental controls (e.g. Apple's Family Sharing/Screen Time) as this could result in conflicting settings between school and parent controls. It may result in unexpected issues where some controls such as screen time restrictions may not work as intended.

## Support for Parents/Guardians

Parents/guardians may wish to consider the following questions to decide the After-School DMA Parent Option that best suits your child/ward.



### A. Child's/ward's current device usage habits

- How much time does my child/ward spend on their device?
- How well is my child/ward able to regulate their device usage on their own?
- Does my child/ward get easily distracted while doing online learning?



### B. Parents'/Guardians' involvement

- How confident and familiar am I with managing my child's/ward's cyber wellness?
- Are there existing routines and open conversations on the use of the Internet at home?
- Am I aware of how to prevent different types of cyber threats that my child/ward might face?

## Data Security

- All user data collected through the MOE DMA will be stored in secure servers managed by appointed DMA Vendors with stringent access controls and audit trails implemented.
- Data such as device information, email address of students and parents, device information will be deleted when the student graduates or leaves school. Website URLs accessed by students will be deleted at the end of each term.
- The MOE DMA solutions used are cloud-based Software-as-a-Service (SaaS) solutions and are trusted solutions that have been operating for many years. They have also been subject to regular security reviews and assessments by independent reviewers.
- MOE DMA solutions have sufficient security robustness to ensure that the data collected is properly stored and protected. MOE will also subject the DMA Vendors to regular security system audits based on tender requirements.
- To prevent unauthorised access, DMA Administrators and DMA Vendors will be required to access their accounts using 2-factor authentication or the equivalent to ensure proper accountability for information access and other activities performed. There will be regular account reviews and audits for DMA Administrators' and DMA Vendors' accounts.

## Data Collected by the MOE DMA

1. The MOE DMA does **NOT** collect any of the following data:
  - Login IDs and passwords entered into websites or into any applications
  - Actions performed (e.g., posts, online comments, items added to a shopping cart, etc.) when visiting websites and using apps
  - Documents and photos stored in the PLDs
  - PLD location
  - Webcam videos and microphone recordings
2. Parents may update their personal data (e.g., email addresses, names) by contacting the school, in accordance with the Personal Data and Protection Act (PDPA).

# Device and Funding Information

## JURONGVILLE 2026 PLD



The school will be using the **iPad 11 inch A16 Bionic Chip 6GB DDR5 128GB with Apple Pencil (USB C) and Logitech Rugged Combo 4** for teaching and learning.

Total cost of the bundle includes 4-year warranty and 4-year insurance with GST: **\$829.30**

# Jurongville's PLD 2026



The school chose the device because of:

- **Ultra-light Portability** (Approx. 0.6kg)
- **Retina Display Quality** (High-resolution visuals)
- **Professional Creative Apps** (iMovie, GarageBand)
- **High Resale Value** (Strong trade-in returns)
- **Advanced Camera System** (Ideal for AR and filmmaking)
- **Precision Pencil Support** (Natural handwriting/drawing)
- **Strong Offline Capabilities** (Apps work without Wi-Fi)
- **All-Day Battery Life** (Highly power efficient)

# Insurance Coverage

## Device Bundle includes

iPad 11 inch A16 Bionic Chip 6GB DDR5 128GB with Apple Pencil (USB C) and Logitech Rugged Combo 4  
4 Years Warranty and Insurance

Students' PLD will come with the **Base Device Bundle** which includes:

- 4-year warranty and
- 4-year insurance (which includes 2 repairs or 1 replacement claim)

Please note that the price of the PLD Bundle may appear to be higher than similar models on the retail market as the price of those devices usually does not include extended warranty and insurance coverage.

Insurance Coverage	Claimable
<ul style="list-style-type: none"> <li>• Fire</li> <li>• Lightning</li> <li>• Power Surges</li> <li>• Accidental e.g water spillage, drop etc</li> <li>• Theft due to forcible entry</li> <li>• Robbery</li> </ul> <p>* <b>Accidental loss</b> will not be covered by insurance.</p>	<p>2 repairs or 1 replacement claim (4-year insurance)</p>

## Funding Support for Singapore Citizen (SC) Students

- **The cost of the device bundle can be paid using your child's/ward's Edusave account**, after setting aside provision for payment of miscellaneous fees.
- To ensure the affordability of devices, MOE has provided Edusave top-ups from 2020 to 2023 to all eligible Singaporean students in primary and secondary schools. In 2025, MOE has provided a \$500 Edusave top-up for students aged 13-16 years old.
- These top-ups are on top of the annual \$290 credited into the Edusave account for Secondary School students and \$230 for Primary School students.

## Funding Scenario: Student A (SC)



For SC students who are on MOE Financial Assistance Scheme or whose family's monthly income meets the following criteria:

The remaining amount will be payable from the students' Edusave account. If there is insufficient balance in the students' Edusave account for the remaining amount, MOE will provide additional subsidy so that the cash out-of-pocket (OOP) is \$0.

Gross Household Income (GHI) ≤ \$4,000, or Per Capita Income (PCI) ≤ \$1,000 MOE will subsidise 50% of device bundle cost or \$350, whichever is lower	
Device Bundle Cost	<b>\$829.30</b>
Student Subsidy (50%)	<b>\$414.70 (rounded up to nearest 10 cents)</b>
Available Edusave Balance <i>(After setting aside for misc fees)</i>	\$400.00 before deduction \$400.00 will be deducted
Additional Subsidy	<b>\$14.60</b>
Cash Out-of-pocket	<b>\$0.00</b>

For more details on financial assistance, please approach the school.  
Each student will subsequently receive a personalised bill

Model: iPad 11-inch (A16)  
Processor: A16 Bionic chip & Memory: 6GB  
Storage: 128GB  
WARRANTY & INSURANCE:(4 YEARS COVERAGE)  
APPLE PENCIL (USB-C) & LOGITECH RUGGED COMBO 4





## Funding Scenario: Student B (SC)

- For SC students whose family's monthly income is:

The remaining amount will be payable from the students' Edusave account. If there is insufficient balance in the students' Edusave account for the remaining amount, MOE will provide additional subsidy so that the cash out-of-pocket (OOP) is not more than \$50.

Student B (Non MOE-FAS SC from lower income family) $\$4,000 < \text{Gross Household Income (GHI)} \leq \$5,500$ , or $\$1,000 < \text{Per Capita Income (PCI)} \leq \$1,375$ MOE will subsidise 30% of device bundle cost or \$200, whichever is lower	
Device Bundle Cost	<b>\$829.30</b>
Student Subsidy (30%)	<b>\$248.80 (rounded up to nearest 10 cents)</b>
Available Edusave Balance <i>(After setting aside for misc fees)</i>	\$400.00 before deduction \$400.00 will be deducted
Additional Subsidy	<b>\$130.50</b>
Cash Out-of-pocket	<b>\$50.00</b>

For more details on financial assistance, please approach the school.  
Each student will subsequently receive a personalised bill.



## DEVICE AND FUNDING INFORMATION

# Funding Scenario: Student C (SC)



Subsidies will not be provided for SC students whose family's monthly: Gross Household Income (GHI) is above \$5,500 or Per Capita Income (PCI)<sup>#</sup> is above \$1,375.

Parents/Guardians can use their child's/ward's Edusave or cash to defray the device bundle cost.

<sup>#</sup>PCI is Gross Household Income divided by the number of household members.

Student C (Not Eligible for Subsidy) GHI > \$5,500 or PCI > \$1,375	
Device Bundle Cost	<b>\$829.30</b>
Available Edusave Balance <i>(After setting aside for misc fees)</i>	\$400.00 before deduction \$400.00 will be deducted
Cash Out-of-pocket	<b>\$429.30</b>

For more details on financial assistance, please approach the school.  
Each student will subsequently receive a personalised bill.

Model: iPad 11-inch (A16)  
Processor: A16 Bionic chip & Memory: 8GB  
Storage: 128GB  
WARRANTY & INSURANCE:(4 YEARS-AppleCare+)  
APPLE PENCIL (USB-C) & LOGITECH RUGGED COMPACT 4



**What's Next?**

## For Singapore Citizens (SC) Students



- 1) Parents/Guardians can access the **Parental Consent for the Purchase of Personal Learning Device (PLD)** via a Parents Gateway (PG) notification\* that have been sent to you on **Wed 7 Jan 2026**
- 2) Parents/Guardians who want to use Edusave funds for the PLD (for Singapore Citizens students only), please access: <https://go.gov.sg/edusaveformsgso> by **Fri 16 Jan 2026** to set up a **PDLP Standing Order** as this was not applicable during primary school.

Time Frame	Activity
Wed 7 Jan	Parent Gateway Notification and Letter
Fri 9 Jan	Parent Briefing
Before Fri 16 Jan Online through (Parent Gateway) & Withdrawal of Edusave Fund Standing Order.	Click Yes to <b>Parental Consent for the Purchase of Personal Learning Device (PLD)</b> via PG  Submit form (Link available in PG) for Edusave withdrawal  Parents without access to Parent Gateway can request for Hardcopies from their Child's CM Submit the consent form to the <b>CMs by 16 Jan</b>
Feb	Payment if any to be made by 2 weeks after receiving the School Bill
March 2026	Collection of devices by students

#### WHAT'S NEXT?

## For Permanent Residents / International Students

Time Frame	Activity
9 Jan to 16 Jan	<ol style="list-style-type: none"><li>1. Collect Hardcopy of Forms from CMs<ul style="list-style-type: none"><li>• Intent to Purchase Personal Learning Device (PLD);</li><li>• Authorisation Form for the Collection of PLD</li></ul></li><li>2. Submit consent to PLD purchase</li></ol>
Feb	Payment to be made by 2 weeks after receiving the School Bill
March 2026	Collection of devices by students

WHAT'S NEXT?

## Collection of Devices

Your child/ward will be collecting his/her device in school **from end of Term 1**

If you would like to personally/have another adult to verify the condition of the device during collection with your child/ward:

- You may either collect the device personally or appoint an adult proxy to do so **at the vendor's service/collection centre\***.
- Your child/ward would need to bring the device to school and arrange for the school's IT department to install the DMA.

Please approach the school for further advice or clarification if you would like to make this arrangement.

\*Parents/Guardians (or adult proxy) will **not** be able to collect the PLD from the school.

OFFICIAL(OPEN)\NON-SENSITIVE

# Device Collection Centre



Device Collection Centre Location	Collection Centre Number	Collection Centre Operating Hours
219 Henderson Road Henderson Industrial Park #05-01 Singapore 159556	6272 0088	Mon – Thurs: 0830 – 1730 Fri: 0830 – 1700

WHAT'S NEXT?

## Important Contacts / Helplines

To access / find out more about...	Contact / Helpline
This deck of slides	<a href="https://www.jurongvillesec.moe.edu.sg/">https://www.jurongvillesec.moe.edu.sg/</a>
Edusave balance	6260 0777 (MOE)
Financial assistance	65638704 (JVS)
Feedback & Other Questions	<a href="mailto:lrantaffysaidb@schools.gov.sg">lrantaffysaidb@schools.gov.sg</a> (HOD ICT)

# Thank you



OFFICIAL(OPEN)NON-SENSITIVE